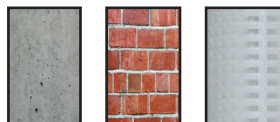


# CHEMFIX PE

## Polyester RESIN



A two component chemical anchoring injection system. A formulation derived from polyester resin with high bond strength, developed principally to anchor threaded rods into concrete, and for masonry and hollow wall installations. Used widely for medium loads in both horizontal and vertical applications.

### • CHARACTERISTICS

- Suitable for medium loads for non-critical applications.
- Fast working times for early loading in time sensitive applications.
- Use in outdoor environments and fixing holes.
- Extremely versatile in masonry, hollow, aerated concrete.
- Crack and gap filling repairs in concrete vertical or horizontal.
- 10:1 resin available in a variety of cartridge types.

### • APPROVALS / CERTIFICATIONS / TESTING

- Pending - ETA ETAG 029 Hollow Wall / Masonry Installations.
- ITB Approval (Poland) 0973/W
- LEED tested 2009 EQ c4.1 SCAQMD rule 1168 (2005.)
- VOC A+ Rating (Volatile Organic Content)

### • PHYSICAL PROPERTIES

- Mixed Colour - Grey
- Density - 1.71 kg/m<sup>3</sup>
- Compressive Strength - 43.5 N/mm<sup>2</sup> (EN ISO 604)

### • CARTRIDGE SIZES

165ml | 300ml | 410ml  
345ml | 825ml



### • TYPICAL TENSILE PERFORMANCE - STANDARD EMBEDMENT DEPTH

Concrete, C20/25, 5.8 Grade Studding						
Size	Recommended Load (kN)		Spacing (S <sub>cr,N</sub> ) (mm)	Drill Hole Ø (mm)	Fixing Hole Ø (mm)	Setting Depth (mm)
	Tension (N <sub>rec</sub> )	Shear (V <sub>rec</sub> )				
M8	6.55	5.14	160	10	9	80
M10	8.22	8.57	200	12	12	90
M12	11.34	12.00	240	14	14	110
M16	16.30	22.29	320	18	18	125
M20	25.73	34.86	400	24	22	170
M24	32.16	50.29	450	28	26	210
M30	44.53	81.43	520	35	32	280

# CHEMFIX PE

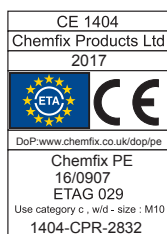
# Polyester RESIN

## • WORKING AND HARDENING TIMES

Base Material Temperature	-10°C**	-5°C**	5°C	15°C	25°C	35°C
Gel Working Time	50'	40'	20'	9'	5'	3'
Curing Time Dry Concrete	240'	180'	90'	60'	30'	20'
Curing Time Wet Concrete	x 2	x 2	x 2	x 2	x 2	x 2

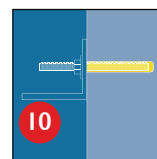
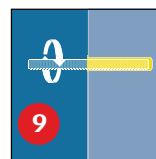
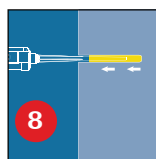
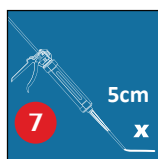
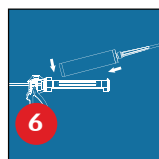
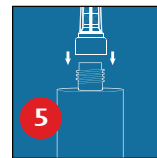
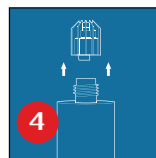
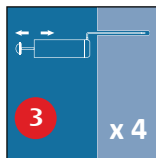
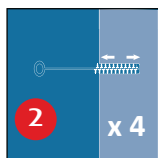
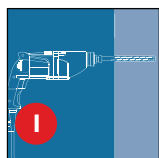
\*\*Resin Temperature must be at least 20°C

## • APPROVALS

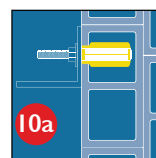
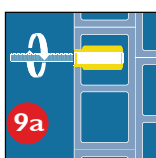
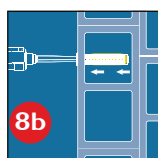
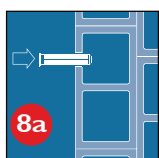


## • INSTALLATION

Solid substrates



Hollow wall



For further information, please refer to the Technical Data Sheet.

## • STORAGE / SHELF

This product should be stored between +5°C & +25°C.

Avoid Direct Sunlight

The Shelf life of the product is 18 months from the manufacture date.