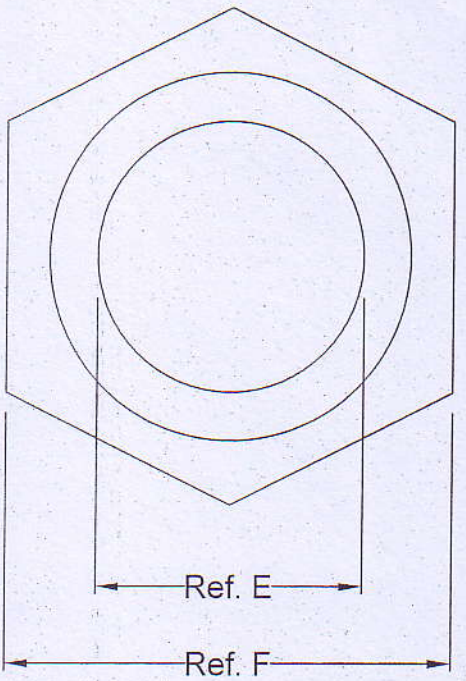
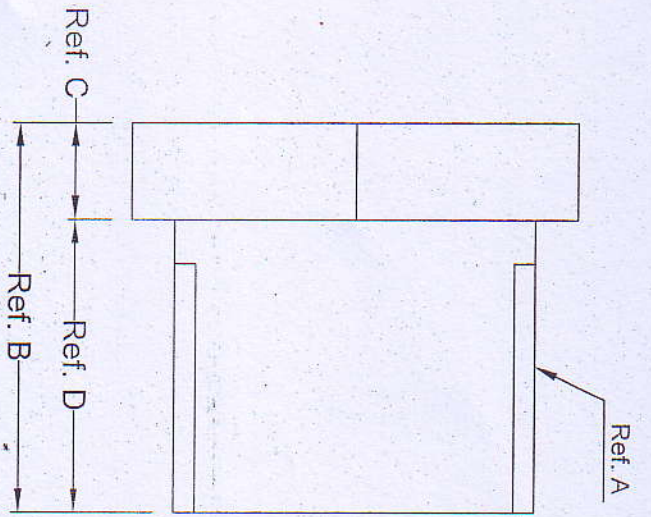


RUPPAM



A: Thread	B: Overall Length	C: Head Length	D: Length	E: Bore	F: Across Flats
M16	13.10	3.00	10.10	12.50	17.00
M20	13.20	3.00	10.20	16.30	20.80
M25	13.70	3.20	10.50	21.30	25.80
M32	14.80	3.60	11.20	27.90	32.80
1½"	16.70	3.90	12.80	33.80	39.20
2"	19.20	4.50	14.70	45.80	51.80
Tolerance	± 0.50	± 0.30	± 0.30	± 0.30	± 0.30

TITLE : SHORT MALE BRASS BUSH

DATE : 1-2-2009

ALL DIMENSION ARE IN MM