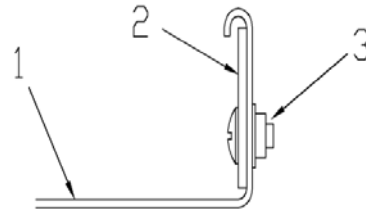
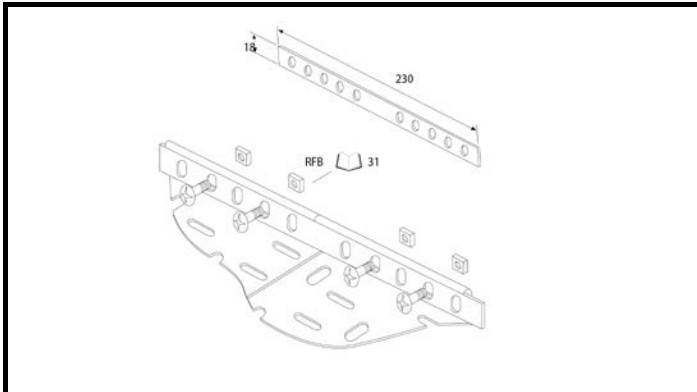


Product Data Sheet

Medium Duty Straight Coupler



Fastening Detail (Per Coupler Pair)

- 1 - Cable Tray
- 2 - TUM/SC (1 pair)
- 3 - M6x20 roofing bolt (x8)
M6 square nut (x8)
M6x18 O/D flat washer (x8)

Couplers supplied in pairs.

Recommended torque setting (M6) 3.15Nm

Fixings not supplied with Couplers.
To be ordered sperately.

Material:

PG	Pre-Galvanised Steel to BS EN 10346 1.0244 + Z275-N-A-C
HG	Mild steel - BS EN 10149-3 grade S280 - min. yield 280 n/mm ² - UTS 370 n/mm ²
DH	BS EN 10025 S275JO+AR+CL1 or equivalent/better.
SS	Stainless Steel - Hot Rolled to B.S.EN10088-2-1.4404+1D

Finishes:

PG	Pre Galvanised to BS EN 10346 Z275 standard.
HG	Hot Dip Galvanized - to BS EN ISO 1461: to a mean coating thickness (minimum) of 55 µm.
DH	Hot Dip Galvanized - to BS EN ISO 1461: to a mean coating thickness (minimum) of 85 µm. 110 µm available upon request
SS	Stainless Steel - Grade 1.4404 (316L)

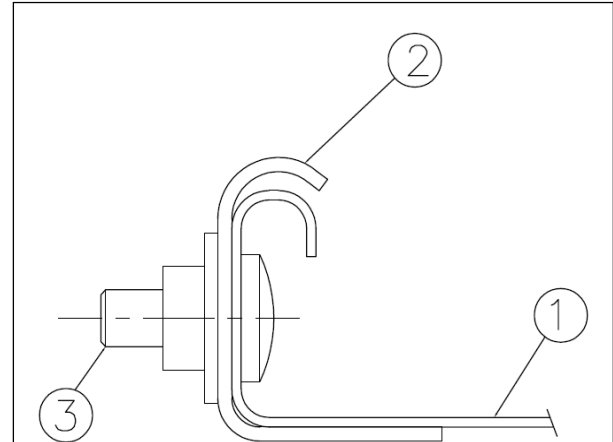
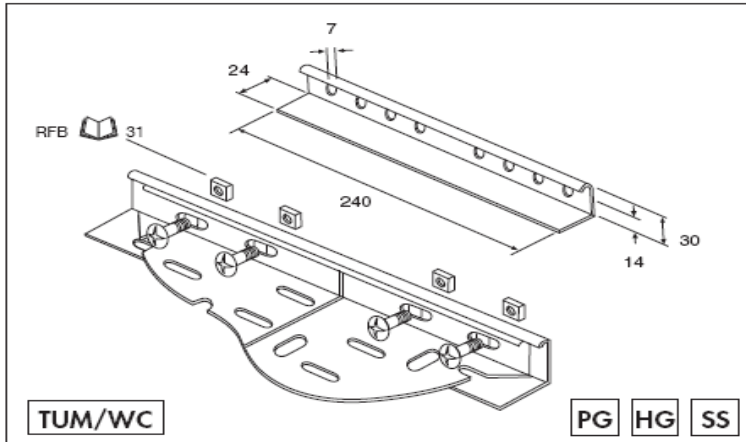
Product Data Sheet

ref: TUM/WC** date: AUG 12

UNISTRUT®

A PART OF **atkore**
INTERNATIONAL

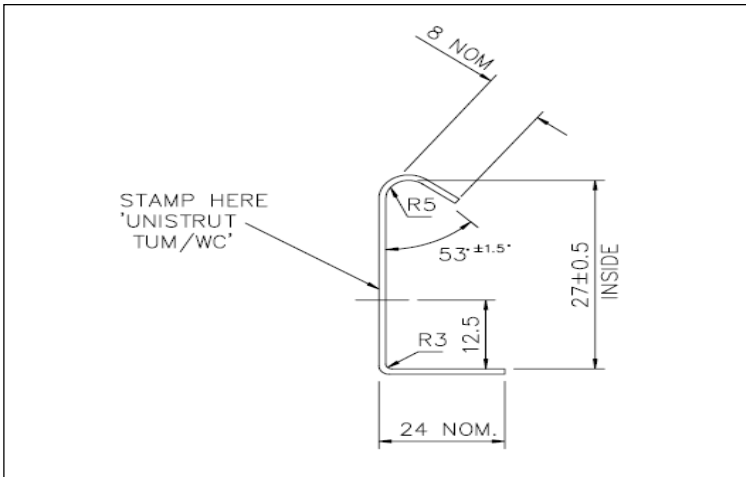
TUM/WC** - WRAPOVER STRAIGHT COUPLER



Fastening Detail (Per Coupler Pair)

- 1 - Cable Tray
- 2 - TUM/WC (1 pair)
- 3 - M6x20 roofing bolt (x8)
M6 square nut (x8)
M6x18 O/D flat washer (x8)

Recommended torque setting (M6) 3.15Nm



TUM/WCPG

Material: Pre-Galvanised Coil Strip EN 10326-1.0244 +Z275-N-A-C
Finish: Self Colour.

TUM/WCHG

Material: Mild Steel to B.S. EN 10149-3 Grade S280
Finish: Hot Dip Galvanised to B.S.EN ISO 1461

TUM/WCSS

Material: Stainless Steel 10088-2 1.4404+1D
Finish: Self Colour.

Fixings :- M6 Grade 4.6 or M6 grade 316 Stainless Steel.

UNISTRUT HEALTH & SAFETY DATA SHEET REF'S :

- No. 001 - PLAIN STEEL, PRE-GALVANIZED, GALVANIZED AND STAINLESS STEEL COMPONENTS
- No. 099 - HOT DIP GALVANIZING (CHANNEL & COMPONENTS)
- No. 102 - STEEL



BS EN ISO 9001
Cert. FM825