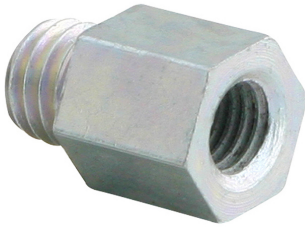


BIS Thread Adaptor (M/F)

adjustment of thread connection

(K 55 35)



6473XXX



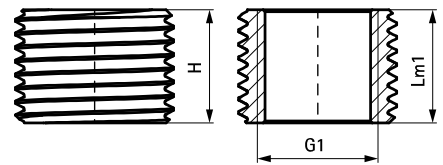
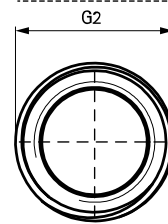
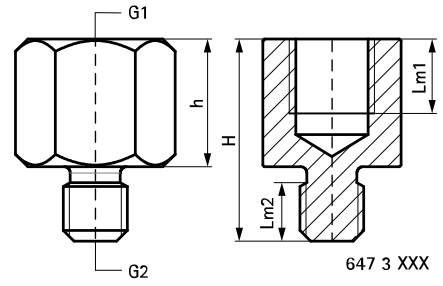
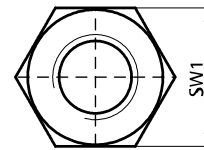
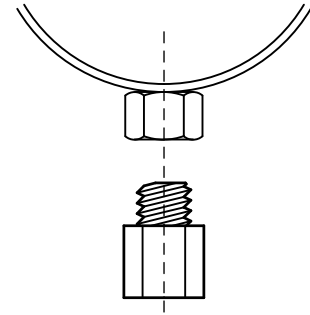
6473521
6484321

Features and benefits

- to enlarge or reduce the thread size in the connection of clamps, etc.
- zinc plated
- tested for fire safety
- material: steel

Part No.	H (mm)	h (mm)	G1	G2	Lm1 (mm)	Lm2 (mm)	SW1 (mm)	Pack 1	Pack 2
647 3 008	19	12	M8	M6	7.0	5.5	13	100	1.000
647 3 206	20	12	M6	M8	7.0	6.0	13	100	2.000
647 3 210	23	15	M10	M8	9.0	6.0	13	100	2.000
647 3 212	23	15	M12	M8	8.0	6.0	17	50	-
647 3 221	30	22	G1/2	M8	13.0	8.0	27	50	250
647 3 306	21	13	M6	M10	7.0	6.0	13	100	-
647 3 308	21	13	M8	M10	7.0	6.0	13	100	2.000
647 3 312	25	15	M12	M10	8.0	8.0	17	50	500
647 3 316	32	22	M16	M10	13.0	8.0	24	50	-
647 3 321	31	21	G1/2	M10	12.0	8.0	27	25	250
647 3 408	23	13	M8	M12	7.0	7.5	13	50	1.000
647 3 410	23	13	M10	M12	8.0	7.5	13	50	1.000
647 3 416	32	22	M16	M12	11.0	8.0	24	50	-
647 3 510	32	18	M10	M16	9.0	11.0	19	50	-
647 3 512	32	18	M12	M16	10.0	11.0	19	50	-
647 3 421	26	11	M10	G1/2	9.0	13.0	27	25	250
647 3 521	15	-	M16	G1/2	15.0	-	-	50	250
647 3 621	25	15	G3/4	G1/2	12.0	7.0	-	50	700
647 3 721	32	20	G1	G1/2	17.0	9.0	-	10	100

M10 and above tested for fire safety.



647 3 521 /
648 4 321