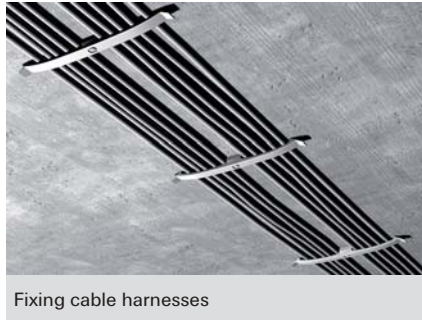
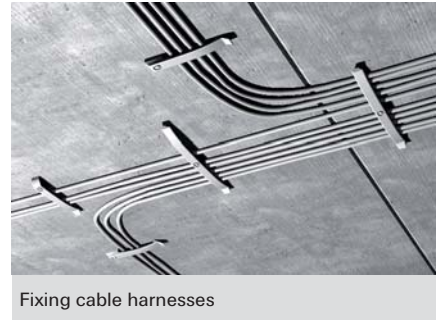


The flat cable clasp for space-saving cable fixing



Fixing cable harnesses



Fixing cable harnesses

BUILDING MATERIALS

When using ClipFix SD:

- Concrete
- Solid pumice block
- Solid sand-lime brick
- Natural stone with dense structure
- Solid brick

CHARACTERISTICS



ADVANTAGES

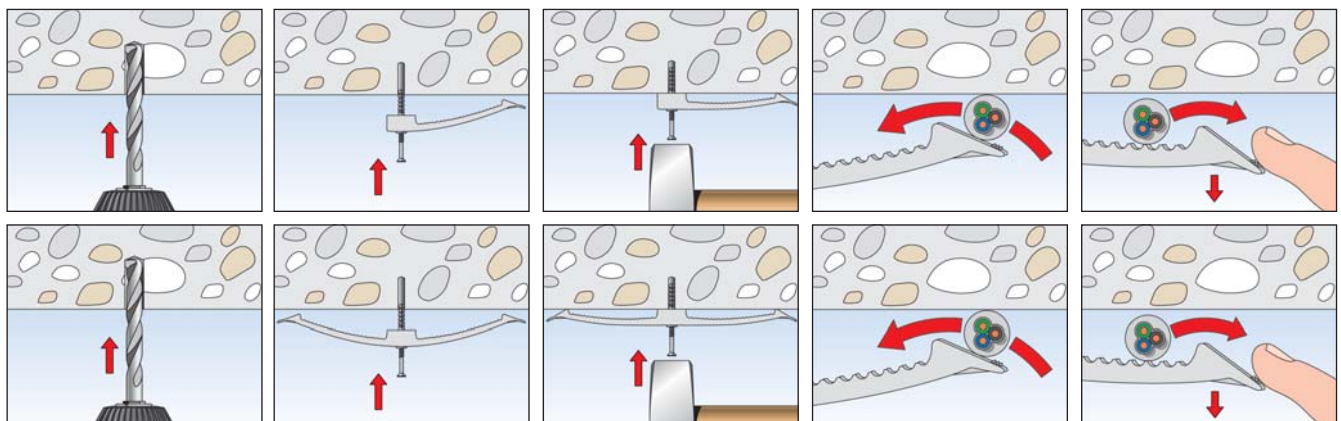
- The flat design of the KB cable clasp allows for a space-saving cable fixing, and simplifies subsequent cable-laying.
- The combination of cable clasp KB and ClipFix SD allows for one-handed installation, thus enabling a flexible and economic installation.
- The long-lasting nylon material is halogen- and silicone-free. It can be used all year round, including during a frost. This ensures a high level of safety.

APPLICATIONS

- For the fixing of several individual cables

FUNCTIONALITY

- The cable clasp KB is adapted to suit the fixture with clip fixing SD or Hammerfix N6.
- Place the ClipFix plus SD directly into the drill hole by hand. No additional screws are needed.
- The Hammerfix N is expanded when the nail is driven in, and holds by friction in the drill hole.
- After installation, the cables are pulled under the clasp. Additional cables can be easily laid after installation too.
- Temperature resistance once installed from -20 °C to +80 °C.



TECHNICAL DATA



Cable clasp with nailplug **KB N 8**



Cable clasp with nailplug **KB N 16**



ClipFix plus cable clasp **SF plus KB 8**



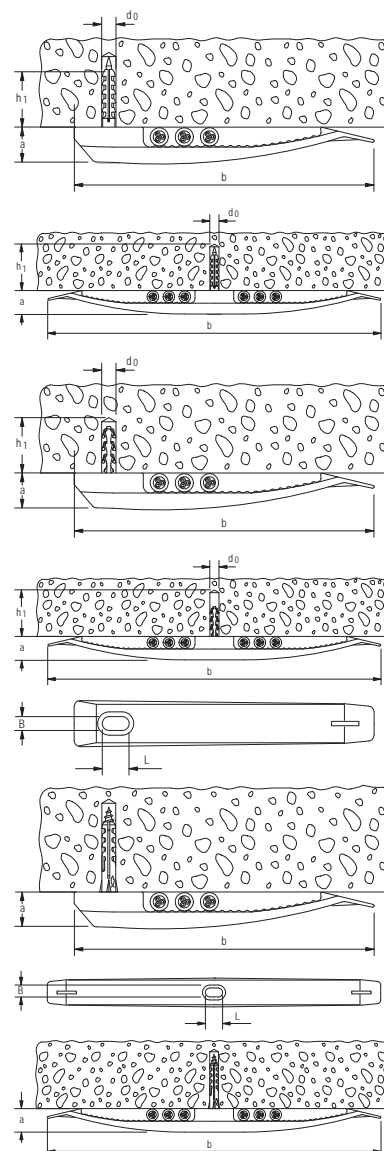
ClipFix plus cable clasp **SF plus KB 16**



Cable clasp **KB 8**



Cable clasp **KB 16**



Item	Art.-No.	Drill hole d_0 [Ø mm]	Min. drill hole depth h_1 [mm]	Dimensions $a \times b$ [mm]	Dimension of slot $B \times L$ [mm]	Max. number of ducts	Sales unit [pcs]
KB N 8	545522	6	35	15 x 133	6 x 10	8 ducts NYM 3 x 1,5	50
KB N 16	545523	6	35	15 x 133	6 x 10	16 ducts NYM 3 x 1,5	25
SF plus KB 8	048171	6	35	15 x 133	6 x 10	8 ducts NYM 3 x 1,5	50
SF plus KB 16	048172	6	35	15 x 230	6 x 10	16 ducts NYM 3 x 1,5	25
KB 8	058135	—	—	15 x 133	6 x 10	8 ducts NYM 3 x 1,5	50
KB 16	058136	—	—	15 x 230	6 x 10	16 ducts NYM 3 x 1,5	50