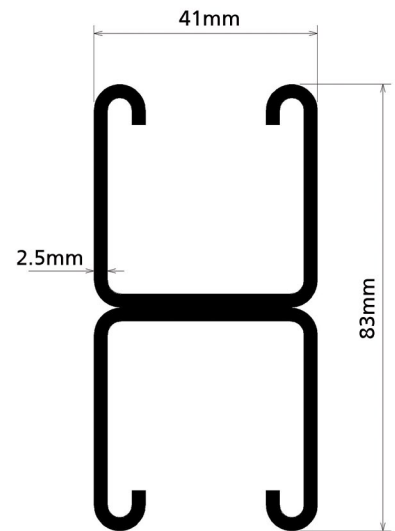
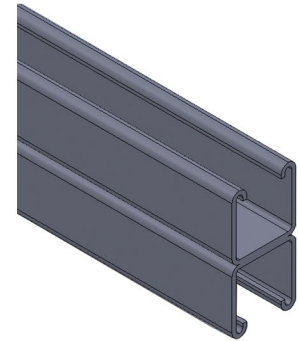
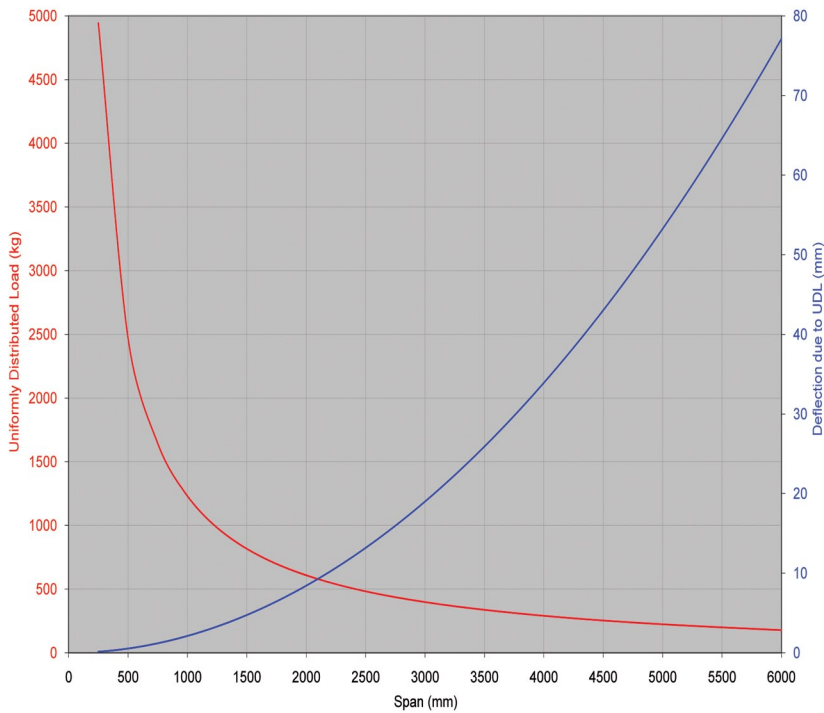


T3779 Back to Back 41x41x2.5 thk. (Mass 5.21kg/m)

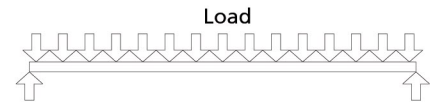
Beam Span (mm)	Ultimate Loading		Limit Def. Span/200		Limit Def. Span/360	
	Total Applied Load (kg)	Total Def. (mm)	Applied UDL (mm)	Total Def. (mm)	Applied UDL (mm)	Total Def. (mm)
250	4943.1	0.1				
500	2469.8	0.5				
750	1644.7	1.2				
1000	1231.5	2.1				
1250	983.1	3.3				
1500	817.2	4.7			718.2	4.2
1750	698.3	6.4			524.3	4.9
2000	608.9	8.4			398.0	5.6
2250	539.1	10.7			311.0	6.3
2500	483.0	13.2	457.4	12.5	248.4	6.9
2750	436.9	16.0	374.5	13.8	201.7	7.6
3000	398.3	19.0	311.1	15.0	165.9	8.3
3250	365.5	22.3	261.5	16.3	137.7	9.0
3500	337.2	25.9	221.8	17.5	115.1	9.7
3750	312.5	29.8	189.6	18.8	96.6	10.4
4000	290.8	33.9	162.9	20.0	81.3	11.1
4250	271.5	38.3	140.7	21.3	68.3	11.8
4500	254.2	43.0	121.8	22.5	57.2	12.5
4750	238.6	48.0	105.6	23.8	47.7	13.2
5000	224.4	53.2	91.6	25.0	39.3	13.9
5250	211.5	58.8	79.3	26.3	31.9	14.6
5500	199.7	64.6	68.6	27.5	25.4	15.3
5750	188.8	70.7	59.0	28.8	19.5	16.0
6000	178.7	77.1	50.4	30.0	14.1	16.7



Load, Span & Deflection Graph



Loading Conditions:



TECHNICAL SPECIFICATION

Performance
Complies with BS EN6946:1988